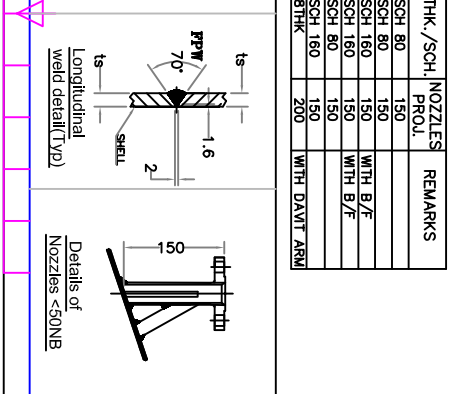
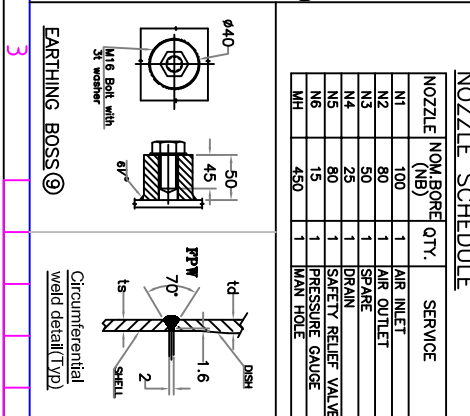
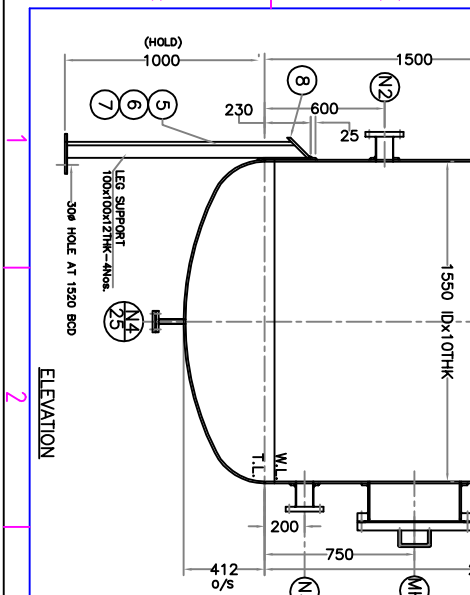
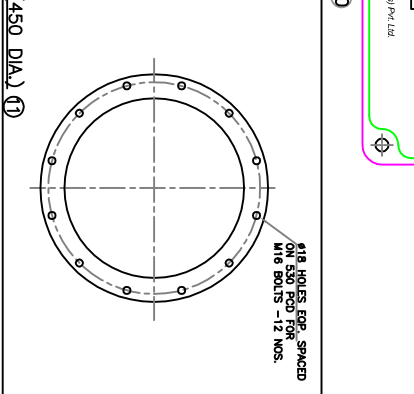
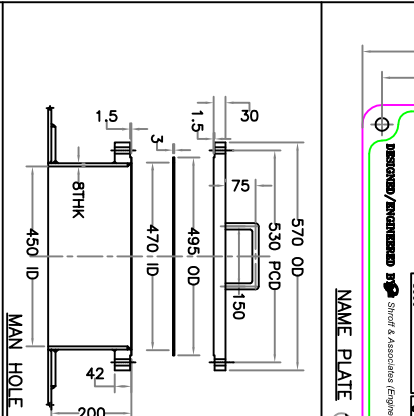


DESIGNED/ENGINEERED BY	Sheet & Associates (Engineers) Pvt. Ltd.
DATE	15/08/2024
SCALE	AS PER DRAWING
PROJECT NO.	2004/2004/1218L
CLIENT	SIECO ENGINEERS PVT. LTD.
LOCATION	BANGALORE
OPERATION	INDOOR
CAPACITY	~8000kg

NOZZLE NOM. BORE QTY.	SERVICE	THK./SCH.	NOZZLES PROL.	REMARKS
N1	AIR INLET	SCH 80	150	
N2	AIR OUTLET	SCH 80	150	
N3	SPARE	SCH 180	150	WITH B/F
N4	DRAIN	SCH 180	150	WITH B/F
N5	SAFETY RELIEF VALVE	SCH 80	150	
N6	PRESSURE GAUGE	SCH 180	150	
MH	MAN HOLE	BTHK	200	WITH DAVIT ARM



1	DESIGN CODE	ASME SECTION VIII DIV 1-2004 ADD 2005
2	DESIGN PR. Kg/cm ² (g)	10
3	DESIGN TEMP. °C	55°
4	HYDRO TEST PR. Kg/cm ² (g)	13
5	OPERATING PR. Kg/cm ² (g)	8.5
6	OPERATING TEMP. °C	45°-50°
7	CORR. ALLOW.	1.5
8	RADIOGRAPHY (SHELL/DISH)	SPOT+ALL 'T' JOINT/FULL
9	WELD JOINT EFF. (SHELL/DISH)	0.85/1.0
10	EMPTY WT.	~1800kgs
11	WATER FILL WT	~8000kgs

1	SHELL	IS 2062 Gr A	1
2	DISH (2:1 ELLIPSOIDAL)	IS 2062 Gr A	2
3	LIFTING LUG	IS 2062 Gr A	3
4	LEG SUPPORT PAD	IS 2062 Gr A	4
5	LEG SUPPORT	IS 2062 Gr A	4
6	LEG BASE PLATE	IS 2062 Gr A	4
7	COVER PLATE	IS 2062 Gr A	4
8	EARTHING BOSS	SS 304	2
9	EARTHING BOSS	SS 304	2
10	MANHOLE	IS 2062 Gr A	1

NOTES:-

- ALL DIMENSIONS ARE IN MM. UNLESS OTHERWISE STATED.
- 2nos. 30x6THK STIFFENERS 90° APART SHALL BE PROVIDED FOR NOZZLES ≤ 50NB.
- ALL BOLT HOLES TO STRADDLE THE PRINCIPAL CENTER LINE OF EQUIPMENTS.
- DISH END TO BE SUBJECTED TO DIP TEST ON KNUCKLE PORTION BOTH SIDES.
- NOZZLE FLANGES HAVE 8" NPT TEST HOLE & SHALL BE SOAP SOLUTION TESTED WITH AIR AT 1.25kg/cm² (g) & HOLES CLOSED WITH WELDING & GROUND FINISHED.
- ALL NOZZLE PROJECTIONS ARE TAKEN FROM VESSEL OD TO FACE OF FLANGES.
- ALL FABRICATED FROM PLATE & SHALL BE 100% RADIOGRAPHED.
- ALL THE CS UNMACHINED SURFACES TO BE PAINTED WITH TWO COATS OF ZINC CHROMATE PRIMER AFTER WIRE BRUSHING & CLEANING THE EXTERNAL SURFACE.
- NOZZLE ABOVE BOMB SHOULD BE R.F. PAD.
- ALL SHARP CORNERS SHALL BE ROUND OF TO 3MM RADIIUS.
- PASTENERS AS PER SA193 GR7/SA194 GR2H.
- NOZZLE PIPES-A106 GR.B.
- FLANGES DETAILS AS PER ANSI B16.5, #150SDRF TYPE.

GENERAL DATA

1	EQUIPMENT NAME	AIR RECEIVER
2	TAG NO.	V-2101A
3	TYPE	VERTICAL
4	QUANTITY	1 NO.
5	LOCATION	INDOOR
6	OPERATION	CONTINUOUS
7	CAPACITY	8 m ³

DESIGN DATA

1	DESIGN CODE	ASME SECTION VIII DIV 1-2004 ADD 2005
2	DESIGN PR. Kg/cm ² (g)	10
3	DESIGN TEMP. °C	55°
4	HYDRO TEST PR. Kg/cm ² (g)	13
5	OPERATING PR. Kg/cm ² (g)	8.5
6	OPERATING TEMP. °C	45°-50°
7	CORR. ALLOW.	1.5
8	RADIOGRAPHY (SHELL/DISH)	SPOT+ALL 'T' JOINT/FULL
9	WELD JOINT EFF. (SHELL/DISH)	0.85/1.0
10	EMPTY WT.	~1800kgs
11	WATER FILL WT	~8000kgs

NOZZLE SCHEDULE

NOZZLE NOM. BORE QTY.	SERVICE	THK./SCH.	NOZZLES PROL.	REMARKS
N1	AIR INLET	SCH 80	150	
N2	AIR OUTLET	SCH 80	150	
N3	SPARE	SCH 180	150	WITH B/F
N4	DRAIN	SCH 180	150	WITH B/F
N5	SAFETY RELIEF VALVE	SCH 80	150	
N6	PRESSURE GAUGE	SCH 180	150	
MH	MAN HOLE	BTHK	200	WITH DAVIT ARM

MAN HOLE (450 DIA)

EARTHING BOSS

DETAILS OF NOZZLES <50NB

CONSTRUCTION MATERIALS: SHEAR & ASSOCIATES (ENGINEERS) Pvt Ltd. Bombay

CONSULTANTS: SIROF & ASSOCIATES (ENGINEERS) Pvt Ltd. Bombay

INSPECTION BY: CLIENT

SIECO ENGINEERS PVT. LTD.
NO. 25, BOMMASANDRA IND. AREA
BANGALORE-560 099, INDIA.

CLIENT: M/S HIKAL LTD.
DRAWN: NS
CHKD: NS
APPROVED: SPS

DATE: 08.01.08
SCO: 07-08-93

SCALE: NTS SHEET 1 OF 1

REV.: 01 02.05.08 As per clients comments NS SPS

REF. DRG.: 1281-VDV-2102

REF.: P.O. NO:7008711, Dt:15.01.08